

## New “NextGen” Seat Flip Operation

### SERVICE NOTICE #17-1011REVB



### All “Flip” Seats Other Than SED Seat Require Tool

As we explained in Sales Update #17-05, Blue Bird and Micro Bird are releasing a new seat referred to as the “NextGen” Convertible Seat. With the new design, the seat “cushion” can be flipped up using a tool to release. This gives a much more open area when cleaning units, especially with the previous leg which was the center of every seat.

Units with Side Emergency Doors will still have the flip seat with the shock which pushes the seat cushion up when no one is seated to give a clear aisle to the door. ALL other seats will have the ability to have the seat cushion flip up with the use of a tool (BB Part #10057143).

Attached is a Technical Publication from Blue Bird on the operation of the flip feature along with Service Information on seat back and seat cushion removal

ALL of our Service Updates can be found on the [New York Bus Sales website](#)  
Or at the [New York Head Mechanic website](#)

Each unit will be delivered with a tool on the key ring as shown in FIGURE #1. Additional tools may be purchased through our Parts Department.



FIGURE 1

**UPDATE 10/28/17 – The cushion was designed to only be raised and lowered by an adult with a tool, and not by any passengers. The cushions need to be down when the bus is in operation, and a child is seated in that row, there is a warning label about that on the seat. (Figure #2)**

**Terminology is something that throws us all off from time to time when dealing with parts ordering or with service issues. We have always referred to the seat at the side e-door as the flip seat and now with ALL these being “flip” seats it may become confusing. To address that, we should all consider these seats “TILT CUSHION” seats.**

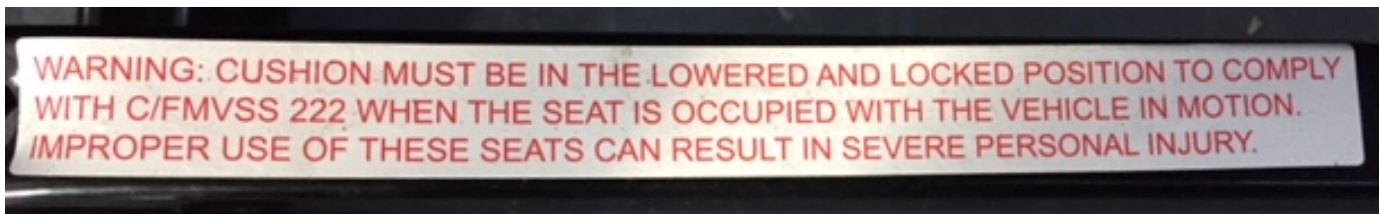


FIGURE 2

ALL of our Service Updates can be found on the [New York Bus Sales website](#)  
Or at the [New York Head Mechanic website](#)

**UPDATE 11-8-18 – It was brought to our attention that the warning label shown in Figure #2 is on some seats mounted at the side emergency doors. (Figure #3)**

**Seeing as these seats have the lock mechanism removed and a shock installed to keep the seat cushion in the raised position to maintain a clear path to the side emergency door, this warning should NOT be present. (Figure #4)**

**We are asking customers to check their units and remove the warning if they are present.**



Figure #3

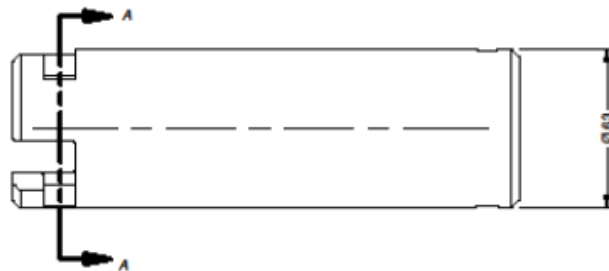
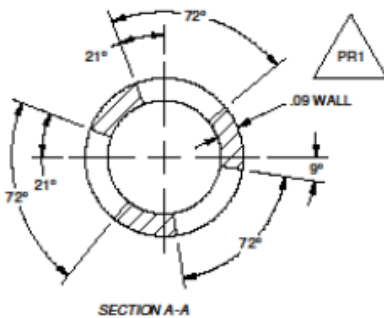
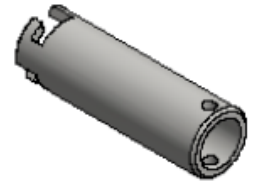
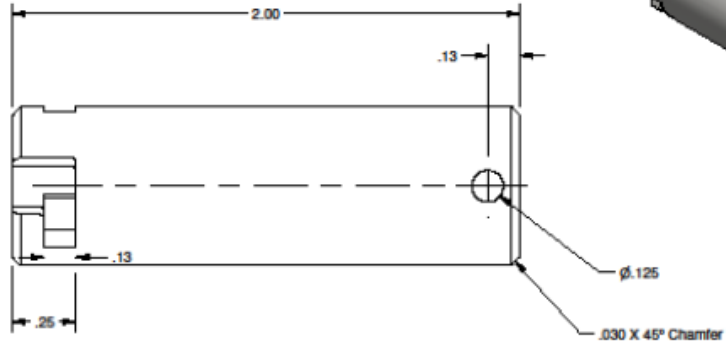
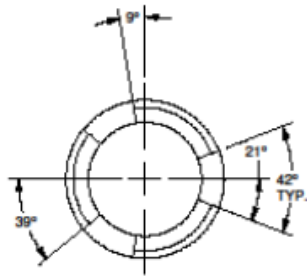


Figure #4

ALL of our Service Updates can be found on the [New York Bus Sales website](#)  
Or at the [New York Head Mechanic website](#)

# NOTES:

1. ELECTRIC PLATE GLOSS BLACK
2. PLATING MIL THICKNESS = 1.0 - 2.0



SECTION A-A

## REVISION HISTORY

REV.	Date:	Description:	From:	CMR
PR	6/1/2017	Preliminary Release for quoting, prototyping, and/or design review	JAK	
PR1	6/14/2017	MADE PART FROM TUBING INSTEAD OF ROUND STOCK	JAK	

<b>MATERIAL INFORMATION:</b>		PART NUMBER: <b>600-640</b>	REV: <b>PR1</b>	SCALE:	PAGE SIZE: <b>A</b>	PAGE: <b>1 of 1</b>
Technology Category: <b>Fabricated Metal</b>		Description: <b>KEY, NEXTGEN LATCHING PLUNGER</b>				
Raw Material: <b>ASTM A1011 CS TYPE B, HRP&amp;O</b>		Operator Notes:				
Material Thickness: <b>.625 DIA. X .090 WALL</b>						
Finish Requirement:		Drawn By: <b>jakralman</b>	Creation Date: <b>6/1/2017</b>			
		2nd CDR:	2nd INSP. DATE:			
Color Match Code:		2801 Northland Drive Elkhart, IN 46514 Phone: 574-262-2390, Fax: 574-262-0814 <a href="http://www.farnesolutions.com">www.farnesolutions.com</a>				
Common Bend Radius:						
Overall Tolerance: +/- 0.005 Hole Pos: +/- 0.015 - Hole Ø: +/- 0.010 Bend Angle: +/- 1.5°						
<b>THIS DRAWING AND THE CONTENTS ARE THE PROPERTY OF THE FHS SOLUTIONS COMPANY. ANY USE OR COPY OF THE DATA CONTAINED ON THIS DRAWING, PHYSICAL OR ELECTRONIC, WITHOUT THE EXPRESS WRITTEN PERMISSION FROM THE FHS SOLUTIONS CO. IS PROHIBITED.</b>						

## PART # TOOL #600-640

ALL of our Service Updates can be found on the [New York Bus Sales website](#)  
Or at the [New York Head Mechanic website](#)



## CONTACT OUR SERVICE OR PARTS DEPARTMENT WITH ANY QUESTIONS

### SERVICE

**Chittenango:** 800-962-5768  
Daryl Wallace or Brian Lamaitis

**Rochester:** 800-463-3232  
Dave Schaub

**Albany:** 866-867-1100  
Ben Reiling

**Warranty:** 800-962-5768  
Morgan Jenkins

**Customer Service  
Representatives**

**Eastern Region:**  
Gary Bigness  
845-500-3707

**Central Region:**  
JJ Richmond  
315-559-3999

**Western Region:**  
Mike Panzica  
716-908-3186

### PARTS

**Director of Parts**  
Jim Hogan  
jhogan@newyorkbussales.com  
607-227-5794

**Chittenango:** 800-962-5768  
Gari McQuade  
gmcquade@newyorkbussales.com  
Bill Cox  
bc Cox@newyorkbussales.com  
John Lewin  
jlewin@newyorkbussales.com  
Dave Grant  
dgrant@newyorkbussales.com

**Albany:** 866-867-1100  
Sean Conway  
sconway@newyorkbussales.com  
Pat Murphy  
pmurphy@newyorkbussales.com

**Rochester:** 800-463-3232  
Tim Gross  
tgross@newyorkbussales.com  
Steve Hibbard  
shibbard@newyorkbussales.com

ALL of our Service Updates can be found on the [New York Bus Sales website](#)  
Or at the [New York Head Mechanic website](#)

