

MicroBird Entrance Door Seal

Tech Tip #17-0419



Updated Entrance Door Seal – Front Leaf/2015 and Later G5

Some customers have reported that the MicroBird G5 entrance doors have wind noise at the entrance door seal between the door “leaves.” Microbird has a new seal which can be installed on units to help eliminate the noise. It has an added “bulb” seal built into the front door leaf seal which adds sealing surface along the length of the door. This helps to eliminate noise from wind intrusion. Adjustment procedures for the entrance doors are below for reference.

Part #17D0160-21336

ALL of our Service Updates can be found on the [New York Bus Sales website](#)
Or at the [New York Head Mechanic website](#)

CONTACT OUR SERVICE OR PARTS DEPARTMENT WITH ANY QUESTIONS

SERVICE

Chittenango: 800-962-5768
Daryl Wallace or Brian Lamaitis

Rochester: 800-463-3232
Dave Schaub

Albany: 866-867-1100
Ben Reiling

Warranty: 800-962-5768
Morgan Jenkins

**Customer Service
Representatives**

Eastern Region:
Gary Bigness
845-500-3707

Central Region:
JJ Richmond
315-559-3999

Western Region:
Mike Panzica
716-908-3186

PARTS

Director of Parts
Jim Hogan
jhogan@newyorkbussales.com
607-227-5794

Chittenango: 800-962-5768
Gari McQuade
gmcquade@newyorkbussales.com
Bill Cox
bcox@newyorkbussales.com
John Lewin
jlewin@newyorkbussales.com
Dave Grant
dgrant@newyorkbussales.com

Albany: 866-867-1100
Sean Conway
sconway@newyorkbussales.com
Pat Murphy
pmurhpy@newyorkbussales.com

Rochester: 800-463-3232
Dave Cook
dcook@newyorkbussales.com
Steve Hibbard
shibbard@newyorkbussales.com

ALL of our Service Updates can be found on the [New York Bus Sales website](#)
Or at the [New York Head Mechanic website](#)



Micro Bird Inc

SERVICE BULLETIN

TITLE: Repair whistling noise of entrance doors

TO: Micro Bird dealers

PRODUCT: Micro Bird buses

FROM: After Sales and Warranty department

PLANNING

Description

Buses that travel on highways at high speeds may have an issue with wind entering between both passenger entrance doors causing a whistling noise or will allow the doors to slightly open while driving. The following modification procedure is valid for all G5 Micro Bird buses. (Please refer to MBSB-81-16 for complete entrance door adjustment procedures)

Compliance

The warranty claim must be placed with Micro Bird within 45 days from the date of repair.

Manpower

Authorised labour: .50 hr

Note: It is recommended to read the entire procedure before performing repairs.

Note: It is assumed that all of the procedures required to embody this modification will be performed according to professionally accepted standards.

MATERIAL AVAILABILITY

SHOP MATERIAL AND TOOLING

Qty	Description	Availability
1	9/16 wrench	Shop material
1	Phillips screwdriver	Shop material
1	drill with a 5/16 drill bit	Shop material
1	Clean rag	Shop material
-	Degreaser or alcohol	Shop material
-	Bubble seal	Supplied by Micro Bird

PROCEDURE

Step 1: Wash the front door seal with a degreaser or alcohol and a clean rag.

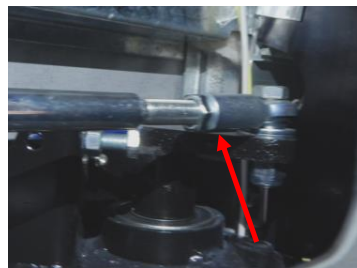
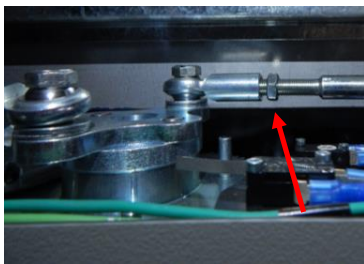


Step 2 : Remove protective tape and glue the bubble seal on the flat part of the flap which will be sitting on the rear door rubber.



Step 3: Adjust door mechanism to have the rear door close sooner so the seals can sit on one another without the rear door ripping the bubble of the front door seal.

- a) Remove head pad
- b) Unscrew nuts at both end of the right rod.



- c) Slightly twist the rod towards you
- d) Try opening and closing the door with the door switch until you get the proper adjustment
- e) Secure the nuts in place
- f) Reinstall head pad

Micro Bird Inc

SERVICE BULLETIN

TITLE: Passenger entrance door adjustment

TO: Micro Bird dealers

PRODUCT: Micro Bird buses

FROM: After Sales and Warranty department

PLANNING

Description

Vehicles manufactured between February 2015 and December 2015 may have issues with some passenger entrance doors not closing properly. The following adjustment procedure is valid for all Micro Bird buses even those which have been constructed outside this period.

Compliance

The warranty claim must be placed with Micro Bird within 45 days from the date of repair.

Manpower

Authorised labour: .75 hr for vehicles manufactured between February and December 2015 as the entrance door seals may need to be reversed. Labour will be of .50 hr for vehicles manufactured outside the above mentioned period.

Note: It is recommended to read the entire procedure before performing repairs.

Note: It is assumed that all of the procedures required to embody this modification will be performed according to professionally accepted standards.

MATERIAL AVAILABILITY

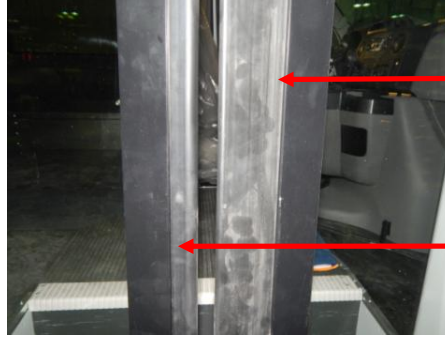
SHOP MATERIAL AND TOOLING

Qty	Description
1	9/16 wrench
1	Phillips screwdriver
1	drill with a 5/16 drill bit

PROCEDURE

Step 1: Make sure the entrance door seals are installed correctly.

If the bus was manufactured between February and December 2015, and you have reversed the seals for any reason, you will need to reinstall them to their original position see pictures below.



Large rubber seal on right door. Flat side out.

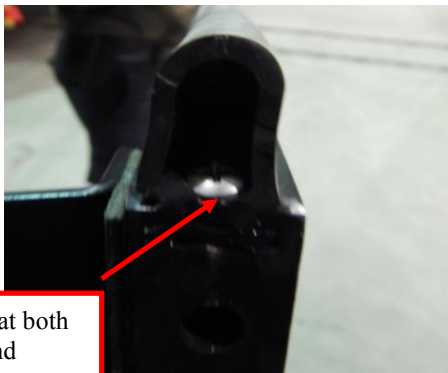
Small rubber on the left door.

Reverse seals if needed:

- a) Remove the bottom metal brackets using a 5/16 bit



- b) Using a Phillips screwdriver, remove both screws (up and down) on the door frame, which are holding the seals in place.



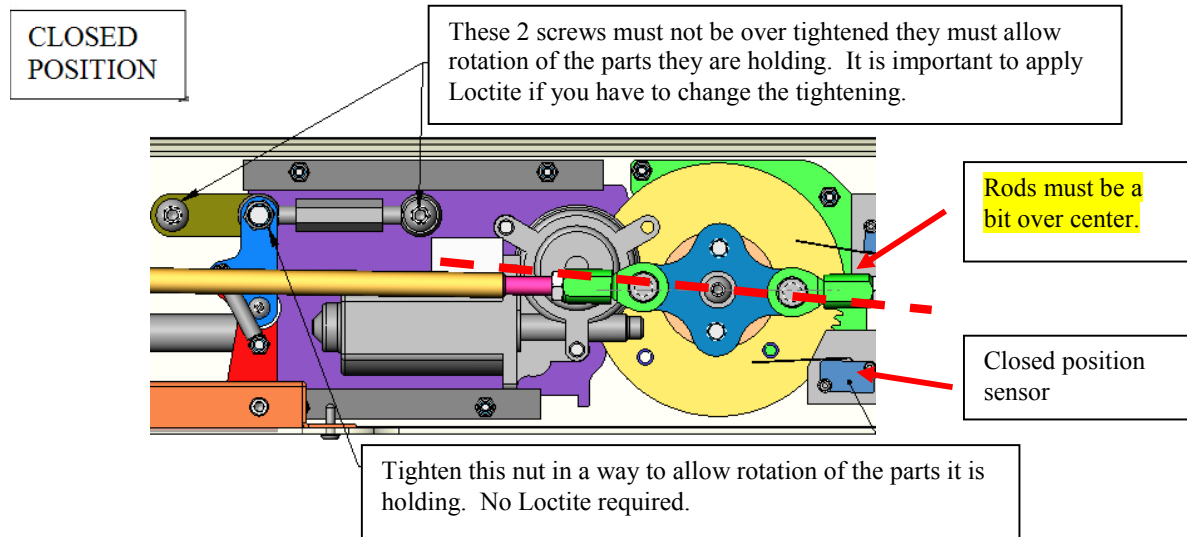
Screw at both end

- c) Reverse seals and reinstall hardware and metal brackets.

Step 2: Door mechanism adjustment

1. Before you adjust the opening mechanism, check the emergency release handle first. This handle must operate easily. If the handle is hard to operate, the screws and nuts may have been over tightened. Check on the drawing below to know what should be done.

IMPORTANT: if you loosen one of the screws, you must remove it completely and apply Loctite 242 on it before you put it back in place (tighten and loosen one quarter turn to allow rotation of the parts).

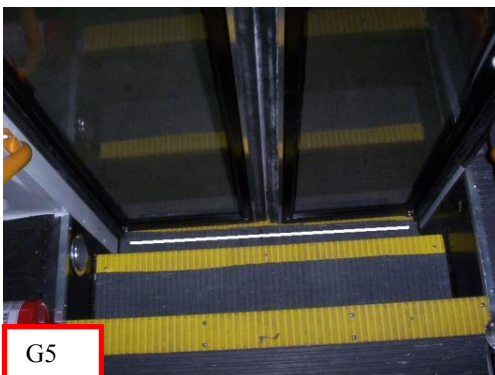


2. Align the gear with the mechanism in closed position. Adjust the closed position sensor to stop the gear at the indicated position. Bend the sensor strip to adjust the sensor.

IMPORTANT: the two rods need to be adjusted a little bit over center to make sure the motor does a complete cycle and closes the doors tightly.

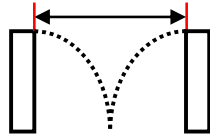
***** At this moment, it is important to test the emergency handle to make sure it operates easily.**

3. Adjust the threaded rods to allow a perfect closing of the door leaves (in straight line & closing at same time). The rods have right hand & left hand threads, so simply turn to lengthen or shorten them. Check the door alignment on the picture below.

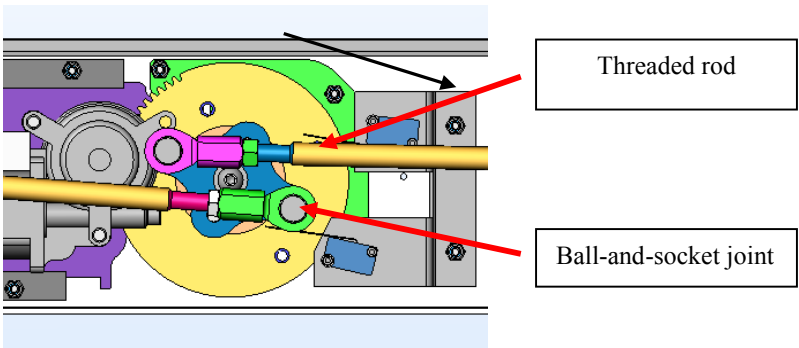


After adjusting the rods, check the emergency handle to make sure it is still operating easily.

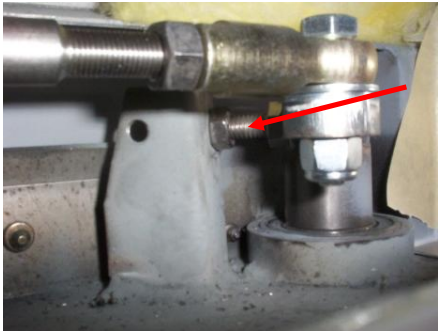
4. Check the opening of the leaves according to the size of the DOD installed: 24" or 32" minimum.



When the door is open, make sure the ball-and-socket joints & rods do not make contact



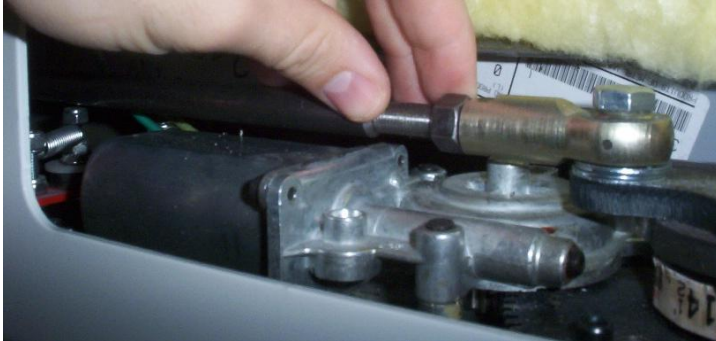
Adjust the stop bolt of mechanism with a ½ " wrench to keep the leaves open.



5. We suggest you use a fish scale to test the handle. Weight to release the emergency door handle should not be more than 10 pounds. The leaves must close with electric power. If they are not doing so, you will have to adjust properly (Refer to the beginning of step 2).



6. After you have adjusted & tested the door leaves operation, tighten the threaded rod nuts using a 9/16" wrench.



Inspection:

Your electric powered double leaf entrance door requires periodic inspection. Each 3 to 6 months:

- Check the condition of main components: bearing, gears, ball-and-socket joints, motor and sensors.
- Check the adjustment of door leaves.
- Visually inspect that all the bolts are in place and correctly tightened.

Every day:

- Test the emergency release handle.