

# Tech Tip



*From your friends at New York Bus Sales*

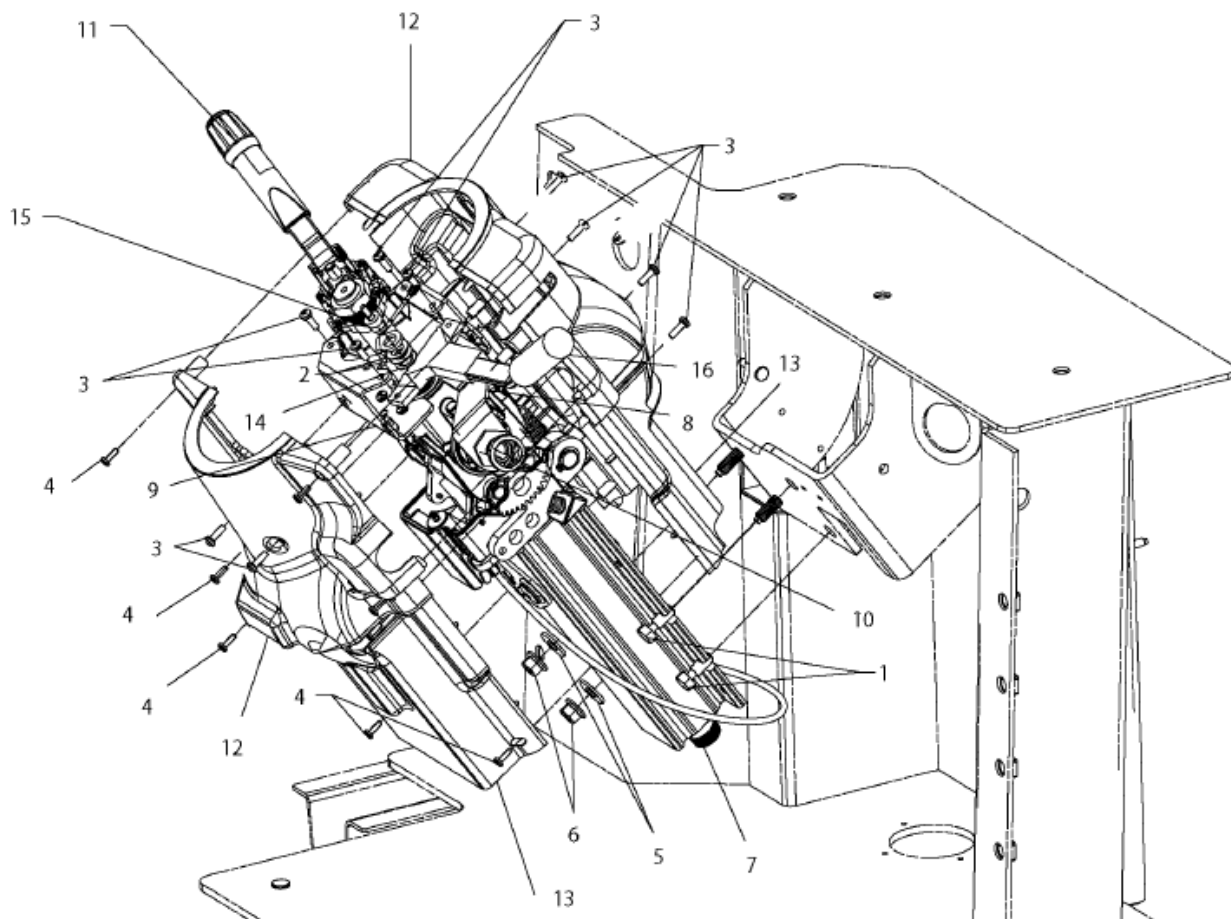
## **Product Affected-New D3 All-American and the Vision with the new cockpit**

- Complaint -** The horn is operating intermittently –
- Cause -** The horn brush has worn down so that it does not make proper contact causing the horn to only work intermittently.
- Correction -** Upon inspection of the horn contact, you will most likely find a sprinkling of gold “dust” in the column and once the horn brush assembly (#15 in Figure #2) is removed you will find that the once ½” long brass button has worn down to under ¼” as in figure #1.

**PLEASE NOTE –** This is premature wear and both Blue Bird and the column manufacturer, Bendix are working to find the root cause and a resolution!



FIGURE #1



**FIGURE #2**

	00125751	MODULE,STRG,TILT-TELE,RNDKEYD,CRUISE	<i>Not Serviced as an assy</i>
1		3/8-16 SEMS HH MACHINE SCREW	
2		3/8 WASHER	
3		#10-24 MACHINE SCREW	
4		#8 PLASTITE SCREW	
5		3/8 I.D. FLAT WASHER	
7	10006546	KIT,DCM,COLUMN,STEERING	
8	10006547	KIT,DCM,BRACKET,MTG,HEAD,UPPER AND	<i>Consist of items 3, 8 and 9.</i>
9	10006547	KIT,DCM,BRACKET,MTG,HEAD,UPPER AND	<i>Consist of items 3, 8 and 9.</i>
10	10006548	KIT,DCM,SWITCH,IGNITION,RANDOM	
11	10006549	KIT,DCM,SWITCH,TURN SIGNAL	
12	10006552	KIT,DCM,SET,COVER,COLUMN,UPPER STEERING	<i>Consist of items 3 and 11.</i>
13	10006553	KIT,DCM,SET,COVER,COLUMN,LOWER	<i>Consist of items 4 and 13.</i>
14		3/8 DIA. RETAINER (SPEED) NUT	
15	10006555	KIT,DCM,BRUSH,HORN,ASSEMBLY	<i>Consist of items 2, 14 and 15.</i>
16	10006551	KIT,DCM,SWITCH,CRUISE CONTROL	



**IMPORTANT  
SPECIFICS  
ISSUE ONLY ON THE NEW  
BENDIX STEERING  
COLUMN  
PART #10006555**

**Contact Our Service Department With Any Questions**

**CHITTENANGO** – phone 800-962-5768 or

Daryl Wallace : [dwallace@newyorkbussales.com](mailto:dwallace@newyorkbussales.com)

Brian Lamaitis : [blamaitis@newyorkbussales.com](mailto:blamaitis@newyorkbussales.com)

**ROCHESTER** – phone 800-463-3232 or

Gary Chichester: [gchichester@newyorkbussales.com](mailto:gchichester@newyorkbussales.com)

**ALBANY** – phone 866-867-1100 or

Ben Reiling: [breiling@newyorkbussales.com](mailto:breiling@newyorkbussales.com)

Steve Searles: [ssearles@newyorkbussales.com](mailto:ssearles@newyorkbussales.com)

**WARRANTY** – 800-962-5768 ext 237

Morgan Jenkins: [mjenkins@newyorkbussales.com](mailto:mjenkins@newyorkbussales.com)

ALL of our Tech Tips can be found on the New York Bus Sales website at

<http://www.newyorkbussales.com/pages/bulletins.cfm>

Or at the New York Head Mechanic website at

<http://www.nyhma.org/viewforum.php?f=2&start=0>