



Tech Tip 16-0105-1

2008/Newer BBCV – “VISION” Hood Repair

Complaint – The hood seems “loose” when opened. We are seeing de-lamination and “splitting” where the hood pieces are glued together.

Cause – We believe that smaller “cracks” actually start in the hinge area of the hood (Figures #1) and if not addressed over time with the opening of the hood for pre-trips etc., especially where wind can catch the hood and push it past it’s normal operating range. If this is not addressed early enough the added flex will allow other areas to de-laminate

Correction – New York Bus Sales has developed a repair kit (Figure #2) which can be added to the hinge areas of the hood to address these cracks BEFORE further damage can occur.

Kit Contains -1 each right and left bracket, 4 5/16”X1” self-tapping “PK” screws, 6 M10-1.5X2 bolts with 1 flat and 1 lock washer per bolt, 1 tube Manus-Bond adhesive/sealant



Figure #1

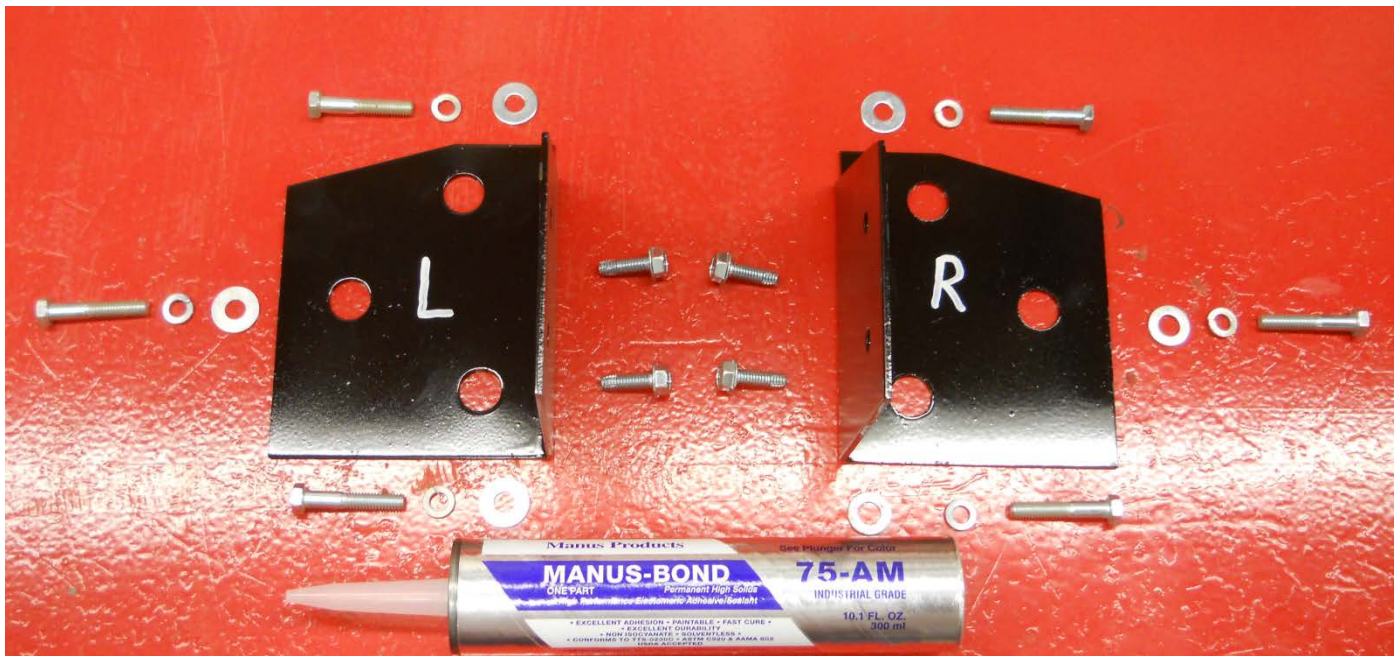


Figure #2

Once you have determined the issue exists and have our kit, we recommend removing the hood so that you have better access to the area. We also recommend both sides be done as it may not be possible to properly align the hood should only one side be done.

When you have the hinge removed you may find the “crack” is much worse than it appeared with the hinge attached (Figure #3). Our kit comes with 2 pre-bent metal plates (RH & LH) which are marked. Before proceeding, position the plates where they will be mounted and make sure that all of the crack(s) are covered. If they are not, then further repair or hood replacement may be necessary.

Taking one of the plates, align the hinge bolt holes and holding the plate in place mark the spot where the 2 smaller holes are on the upright of the hood (Figure #4). Removing the plate and using a 9/32” drill bit, put 2 holes where you have marked. Follow the same procedure on the opposite side. Using an impact gun run the 5/16” X 1” “PK” bolts into the holes to thread them and remove.

Coat the hood where the plate will mount liberally with the Manus Bond provided and set the plate in place. Install the 3 new hood hinge bolts provided and reinstall the 2 PK bolts (Figure #5). Allow the Manus bond time to set.

Re-Install hood and adjust as needed (Figure #6)

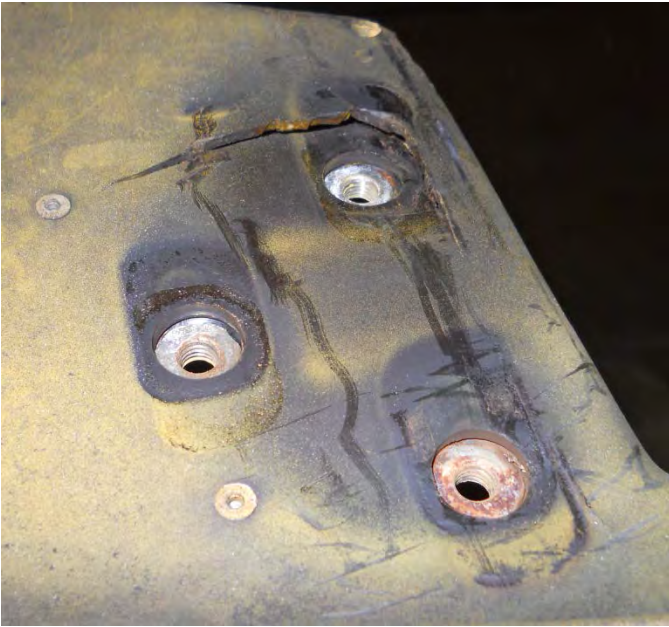


Figure #3



Figure #4



Figure #5



Figure #6

UPDATE – 12/15/15: Recently brought to our attention was the fact that some units, if not addressed in time, have seen issues with the braces inside the headlight housing opening. We now offer a replacement for those hoods that have further issues...please see below



UPDATE – 1/4/2016: New York Bus Sales now has available a “refurbished” hood that has been checked, had all the updated repairs done, painted and ready to bolt on your unit. Your hood must be repairable and returned to us as it will be “refurbished” for other customers as required.

Call Our Parts Department for Details

- **Chittenango Parts** **1-888-267-2787 or 315-687-3920**
Manager: Gari McQuade gmcquade@nybussales.com
Bill Cox bcox@nybussales.com
Dave Grant dgrant@nybussales.com
John Lewin jlewin@nybussales.com
- **Rochester Parts** **1-800-463-3232 or 585-424-3320**
Manager: Dave Cook dcook@nybussales.com
Steve Hibbard shibbard@nybussales.com
Ryan Krolak rkrolak@nybussales.com
- **Ravena Parts** **1-866-867-1100 or 518-756-1111**
Sean Conway sconway@nybussales.com

Customer Service Representatives

Eastern Region Gary Bigness 845-500-3707
Central Region JJ Richmond 315-559-3999
Western Region Mike Panzica 716-908-3186