

Tech Tip

FROM YOUR FRIENDS AT
NEW YORK BUS SALES!



Cummins 2007 & 2010 Engines with Rear Gear Housing Drive Air Compressors

- Complaint –** There is an oil leak at the air compressor. Upon further investigating you can see that the flange is cracked (Figure #1). And while disassembling it is evident that there is pressure between the bracket which mounts to the engine block and the compressor flange. Which are held together with 2 “M10 X 1.50 X 20” bolts. (Item #3 in figure #2). What we have also found is that there is pressure between those brackets and in some cases the bolts have broken.
- Cause –** It has been our experience that when the 2 bolts are loosened, there is as much as 3/16” gap in those brackets which puts undue strain on the compressor flange causing the issue or as previously mentioned breaks the bolts.
- Correction –** What we have found and recommend is loosening the 2 - “M10 X 1.50 X 20” bolts to see if there is pressure between the brackets. If there is a gap which would indicate pressure we recommend the following
- Removing both support brackets from the vehicle and inspect closely (replace if necessary)
 - Inspect the air compressor flange for cracks (replace if necessary)
 - Using Figure #4 as a guideline – **INSTALL ALL THE BOLTS FINGER TIGHT AND THE TORQUE AS FOLLOWS**
 - Torque the 2 - “M12 X 1.75 X 25” bolts in the block to 57 ft/lb (77n/m)
 - Torque the 2 - “M10 X 1.50 X 25” compressor support bracket bolts to torque to 32 ft/lb (43n/m)
 - Torque the 2 - “M10 X 1.50 X 20” bolts between the brackets to 32 ft/lb (43n/m)

PLEASE NOTE – It is recommended to check these bolts and brackets during your PM Inspection!!!

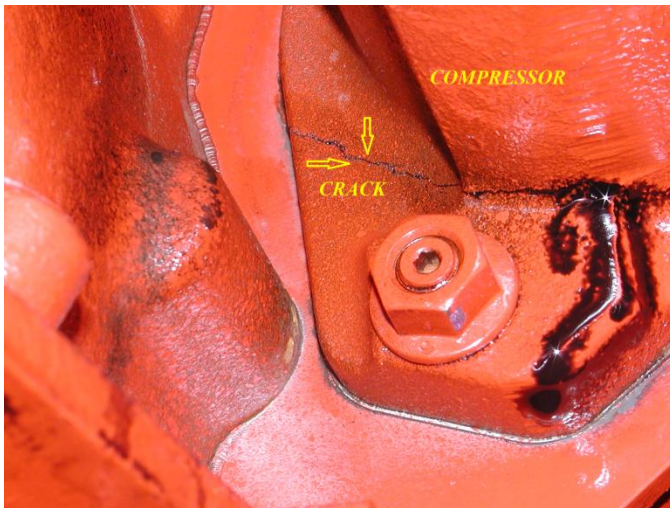


Figure #1

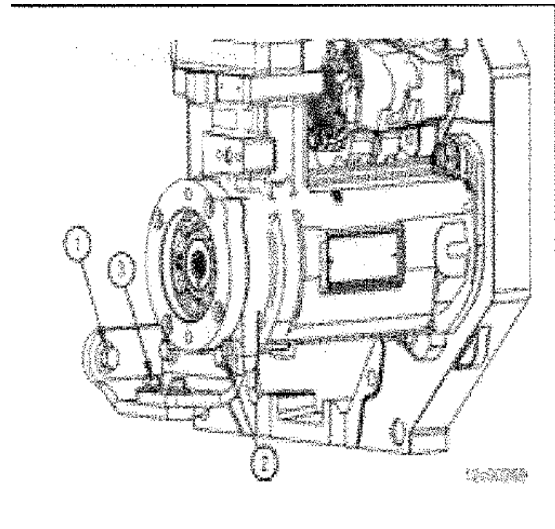


Figure #2

| | |
|---|--|
| <p>CAUTION</p> <p>Air compressor failure can result if any of the mating surfaces are not touching prior to tightening.</p> | |
| <p>Verify the air compressor support bracket is contacting the cylinder block support bracket. Adjust the brackets as necessary. If necessary, loosen the cylinder block support bracket to align the components.</p> | |
| <p>Tighten the air compressor support bracket mounting capscrews (1).</p> | |
| <p>If loosened, tighten the cylinder block support bracket cylinder block mounting capscrews (2).</p> | |
| <p>Tighten the compressor support bracket to the cylinder block support bracket mounting capscrews (3).</p> | |

Figure #4

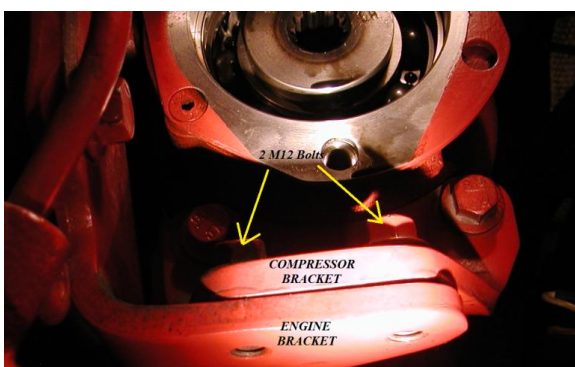


Figure #3

| | |
|------------------------------------|----------|
| BRACE – Air Compressor (Comp Hsg) | #3955092 |
| BRACE – Air Compressor (Eng Block) | #4929461 |
| Bolt #1 – M12 X 1.75 X 25 | #3901249 |
| Bolt #2 – M10 X 1.50 X 25 | #3902460 |
| Bolt #3 – M10 X 1.50 X 20 | #3903990 |

Contact Our Service Department With Any Questions

CHITTENANGO – phone 800-962-5768 or
Daryl Wallace : dwallace@newyorkbussales.com
Brian Lamaitis : blamaitis@newyorkbussales.com

ROCHESTER – phone 800-463-3232 or
Gary Chichester: gchichester@newyorkbussales.com

ALBANY – phone 866-867-1100 or
Ben Reiling: breiling@newyorkbussales.com
Steve Searles: ssearles@newyorkbussales.com

WARRANTY – 800-962-5768 ext 237
Morgan Jenkins: mjenkins@newyorkbussales.com



ALL of our Tech Tips can be found on the New York Bus Sales website at
<http://www.newyorkbussales.com/pages/bulletins.cfm>
Or at the New York Head Mechanic website at
<http://www.nvhma.org/viewforum.php?f=2&start=0>