



Tech Tip **12-0105-1**

Product Affected – Cummins ISB '07 & ISB '10 Engines

Complaint: The v-band clamp on the Diesel Particulate Filter has split.

Cause: Campaign C1154 addresses the issue. Figure 1 shows the v-band clamp (#10). There is also one to the right in the photo.

Correction: Replace the affected original clamp #4965096 with updated part #2871861. When replacing the clamp, the gasket must also be replaced.

See last page for a list of affected Blue Bird units and their engine serial numbers

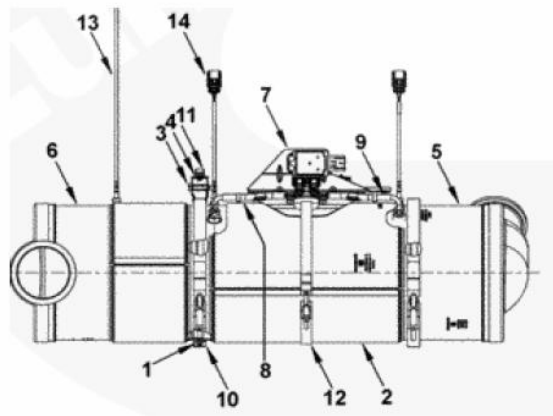


FIGURE #1

Campaign Number	Revision Level	Date	Group Number
C1154	A	25-OCT-2011	
Expiration Date (U.S. and Canada)		Expiration Date (International)	
15-AUG-2021		15-AUG-2021	
Engine Family	Fuel System	Plant	Build Date
			From
ISBe4 (6 Cylinder)QSB6.7ISBISDe, ISD4.5, ISD6.7ISBe, ISB4.5, ISB6.7 CM2250			

**Warranty Campaign ISB, ISC, ISL & ISX CM2250
Aftertreatment V-Band Clamp Safety Campaign**

This safety campaign is being issued to address Aftertreatment V-Band clamp failures on Cummins Midrange & Heavy duty engines.

In order to qualify for repair under this field action an engine:

1. Must be in the attached ESN list
2. Will be covered regardless of coverage status

After verifying the engine meets the above requirements, perform the following actions:

1. Review the ESN list to determine if an engine is eligible to receive these corrective actions.
2. Determine the necessary parts required to complete this safety campaign. The ESN list contains the correct part numbers and quantities for each Engine Serial Number
3. Replace the Aftertreatment Diesel Particulate Filter. For IAB engines, refer to bulletin 4022254m for ISC/L engines, refer to bulletin 4022257, for ISX engines, refer to bulletin 4022250.
4. Note: Aftertreatment installations that require separation of the Aftertreatment assembly components will require replacement of the gaskets prior to installation of the new V-Band clamps.
5. File one claim for all parts labor & travel associated with this safety campaign.
6. Materials removed as a result of this field action must be scrapped

This campaign list 2 different sets of Part Numbers (PNs). The current PNs and the future superseding PNs. PNs 4965096 & 4965097 should be ordered first until stock is depleted. Once the stock of those PNs is depleted, PNs 2871861 & 2871862 will be used. The PDC system will take care of converting your orders to the new PNs once PNs 4965096 & 4965097 stock is depleted.

For more information contact our nearest Service Department

Chittenango: 315-687-3969 - 1-800-962-5768

➤ **Daryl Wallace or Brian Lamaitis**

Rochester: 585-424-3320 - 1-800-463-3232

➤ **Gary Chichester or Dave Schaub**

Ravena: 518-756-1111 - 1-866-867-1111

➤ **Ben Reiling or Steve Searles**

ESN	Band Clamp	Alternate Band Clamp	Gasket	BLDDATE	NAME	VIN NUM	EQUIP_SERIAL_NUM	CITY	STATE	CUSTOMER_NAME
73149395	2871861	4965096	2871451	10/19/10	ISB6.7 2010	1BAKFCA2CF283794	1BABJBP3CF283893	GARDEN CITY	NY	GARDEN CITY PUBLIC SCHOOLS
73167146	2871861	4965096	2871451	12/1/10	ISB6.7 2010	1BAKGCPA0CF282656	1BABLBPA8CF283771	DIX HILLS	NY	HALF HOLLOW HILLS SCHOOL
73133241	2871861	4965096	2871451	9/9/10	ISB6.7 2010	1BAKGCPA6CF282516	1BABJCPA2CF282627	CHITTENANGO	NY	NEW YORK BUS
73133242	2871861	4965096	2871451	9/9/10	ISB6.7 2010	1BAKGCPA6CF282533	1BABJCPA9CF282625	CHITTENANGO	NY	NEW YORK BUS
73136811	2871861	4965096	2871451	9/17/10	ISB6.7 2010	1BAKGCPA6CF282547	1BAKBCPA4BF282432	CHITTENANGO	NY	NEW YORK BUS
73135074	2871861	4965096	2871451	9/15/10	ISB6.7 2010	1BAKGCPA6CF282550	1BAKFCA4BF282435	CHITTENANGO	NY	NEW YORK BUS
73135830	2871861	4965096	2871451	9/16/10	ISB6.7 2010	1BAKGCPA6CF282564	1BAKFCA4BF282455	CHITTENANGO	NY	NEW YORK BUS
73168900	2871861	4965096	2871451	12/3/10	ISB6.7 2010	1BAKGCPA6CF282712	1BAKFCA6CF284205	Odessa	NY	Odessa Montour CSD
73152459	2871861	4965096	2871451	10/26/10	ISB6.7 2010	1BAKGCPA6CF283360	1BAKFCA8CF284206	Odessa	NY	Odessa Montour CSD
73152485	2871861	4965096	2871451	10/26/10	ISB6.7 2010	1BAKGCPA6CF283844	1BAKDCPA8CF284034	PLEASANTVILLE	NY	PACE UNIVERSITY