



Tech Tip

12-0104-3

Product Affected – 2008 & Newer Vision

- Complaint:** The directional turn signals on the hood (Lollipop lights) do not work or work intermittently
- Cause:** During assembly the wires running to those lights were run between the inner fender and hood. If they were run too close to the mounting points then the wires could become cut (FIGURES 1, 2 &3).
- Correction:** Tilt the hood and locate the cutout for the light mounting. There could be an issue if the wire is routed back toward the main harness under the inner fender as in FIGURE #4. Locate the mounting pads and see if the wires run too close, as in FIGURE #5. Loosen or remove the mounting screws to pull the loom from under the inner fender. Pulling the loom back about 4” from the light should reveal the connectors (FIGURE #6). Placing that section of the loom under the narrow outer section of the inner fender cutout (FIGURE #7) should give additional protection from “rub-thru”. Run the loom along the outer edge of the inner fender, secure with wire ties as required.

Fig 1



Fig 2



Fig 3



Fig 4



Fig 5

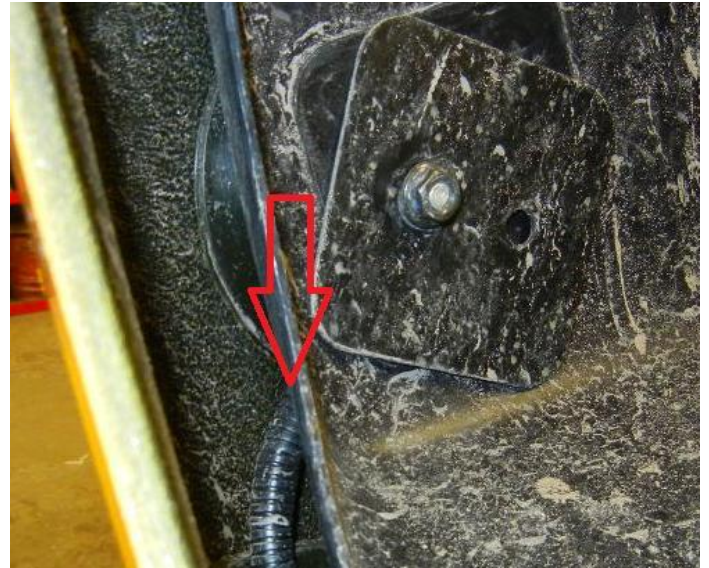


Fig 6



Fig 7



For more information contact our nearest Service Department

Chittenango: 315-687-3969 - 1-800-962-5768

➤ **Daryl Wallace or Brian Lamaitis**

Rochester: 585-424-3320 - 1-800-463-3232

➤ **Gary Chichester or Dave Schaub**

Ravena: 518-756-1111 - 1-866-867-1111

➤ **Ben Reiling or Steve Searles**